

## Parking

There are 19 spaces to the east of the Station as well as street parking on 176th and 176A.



1225 standing at Cloverdale Station

## Neighbours

The Fraser Valley Heritage Railway Society has some pretty special neighbours including the Clover Square Mall just east of the station. The area around the station has many restaurants, stores and services. We suggest that you drop in and visit these fine businesses.



\*photo - Leader Newspaper

As well, you can visit the civic amenities including the Surrey Museum, the Surrey Archives, the BC Vintage Truck Museum and Fraser Downs.

Walk Cloverdale's historic mainstreet and pause at the statue of the late BCER Motorman, Frank Horne, checking his watch to be sure his train is on time.

Made possible  
because of the  
generous support of ...



## Fares (includes tax)

Adult	\$10
Child 12 and under	\$ 5

## Trip Schedule

Service begins June 22nd and operates on the hour, through Thanksgiving Monday.

**First run: 10 am**

**Runs: 11 am, 12 am, 1 pm, 2 pm,**

**Last train: 3 pm**



Approaching Sullivan at 168th St crossing

## Station Operations

### Operating Days

Saturday Sunday and holiday  
Mondays, the station will be open  
from 9 am through 4 pm.

Tuesday through Friday 10 am to 2 pm  
to provide general information on  
the Fraser Valley Heritage Railway's  
2013 operations, future plans and  
opportunities.

Information: 604.574.9056

# Welcome Aboard!

June 22 ~ Oct 14th  
2013



## Surrey's Heritage Interurban Experience

176A Street & Hwy 10 in Historic Cloverdale





# Revisiting History

With the opening of the Fraser River rail bridge in 1904, linking New Westminster to the south shore, the British Columbia Electric Railway moved forward to establish a regional railway to serve the logging and agricultural communities in the Fraser Valley from Brownsville to Chilliwack – a region developing since 1860.



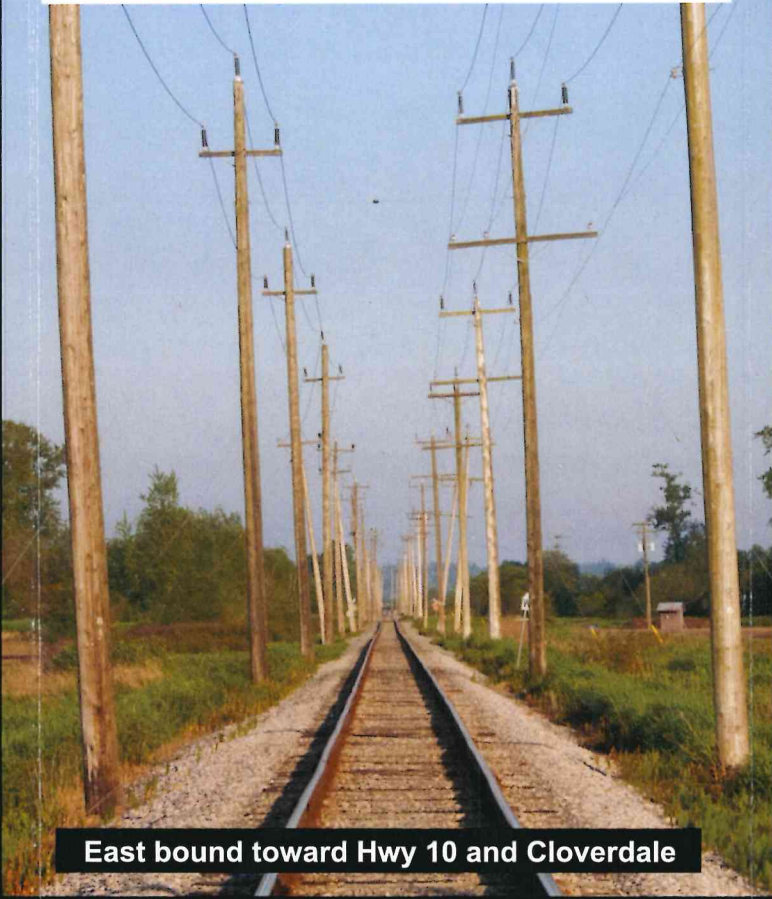
Sullivan Station

The 63.8 mile long railway line provided passenger and freight service from October 1, 1910 until September 30, 1950, when rail passenger service was discontinued in favour of rubber tire buses. Only seven interurban cars were saved from destruction, and fewer still are restored to an operating condition.

The Fraser Valley Line is still intact and SRY Raillink provides freight service to its customers along this historic rail corridor.



Sullivan Station today



East bound toward Hwy 10 and Cloverdale



Route Map: Phase 1~ Cloverdale to Sullivan

# The FVHRS Story

Conceived in 1996 as a special project by the Surrey Heritage Advisory Commission and following a 4-year feasibility study, the Fraser Valley Heritage Railway Society was formed to acquire, restore and operate the two remaining interurban cars BCER 1225 and 1304 on the original route through Surrey. Now it will again be possible to experience a part of Surrey's transportation history by riding the scrupulously restored BCER 1225 between Cloverdale and Sullivan. The route will expand west to Newton, Kennedy and Scott Road incrementally over the following years when both 1225 and 1304 are operating at the same time. BCER 1304 known as the "Connaught" and the only Chilliwack car to survive, is under restoration and should be operational by 2017.



Cars 1304 and 1225 in the Cloverdale car barn



Cloverdale Car barn  
176th St. Surrey, BC Canada  
604.574.9056  
[www.fvhers.org](http://www.fvhers.org)